

CORPORATION OF THE TOWNSHIP OF PRINCE

BY-LAW 92-10

ZONING: TEMPORARY SPECIAL USE EXCEPTION

A by-law to permit temporary use of the land at 2611 Second Line West

THE COUNCIL of the Corporation of the Township of Prince, pursuant to Section 38 of the Planning Act, 1983, as amended, ENACTS as follows:

1. AUTOMOBILE BODY SHOP OPERATION AT 2611 SECOND LINE WEST

Notwithstanding the provisions of By-law 77-7, an automobile body shop may be permitted for a period of three years only on the lands described as part of the Northwest Quarter Section 36, Township of Prince also more particularly described as Parts 1 & 3 IR PLAN 7403 located at 2611 Second Line West, which lands are shown on Schedule "A" to By-law 77-7 and are also shown outlined and marked "Subject Property" on the map attached as Schedule "A" hereto.

2. SCHEDULE "A"

Schedule "A" hereto forms part of this by-law.

3. EFFECTIVE THREE YEARS ONLY

The special, provision enacted by section 1 of this by-law does not repeal, alter or amend By-law 77-7 and upon expiration of the period of three years from the date of passing of this by-law, the provision by By-law 77-7 continues to apply to the lands affected by this by-law, and the use of such land shall not constitute the establishment of a right to continue the non-conforming use after the expiration of this by-law.

4. VIOLATION AND PENALTY

Every person who uses the subject property or existing new structures in any manner contrary to any provision of this by-law or who causes or permits such use is liable upon conviction therefore to a penalty not exceeding \$2,000.00 exclusive of costs.

READ THREE TIMES and PASSED in open Council this 8th day of September, 1992.

REEVE

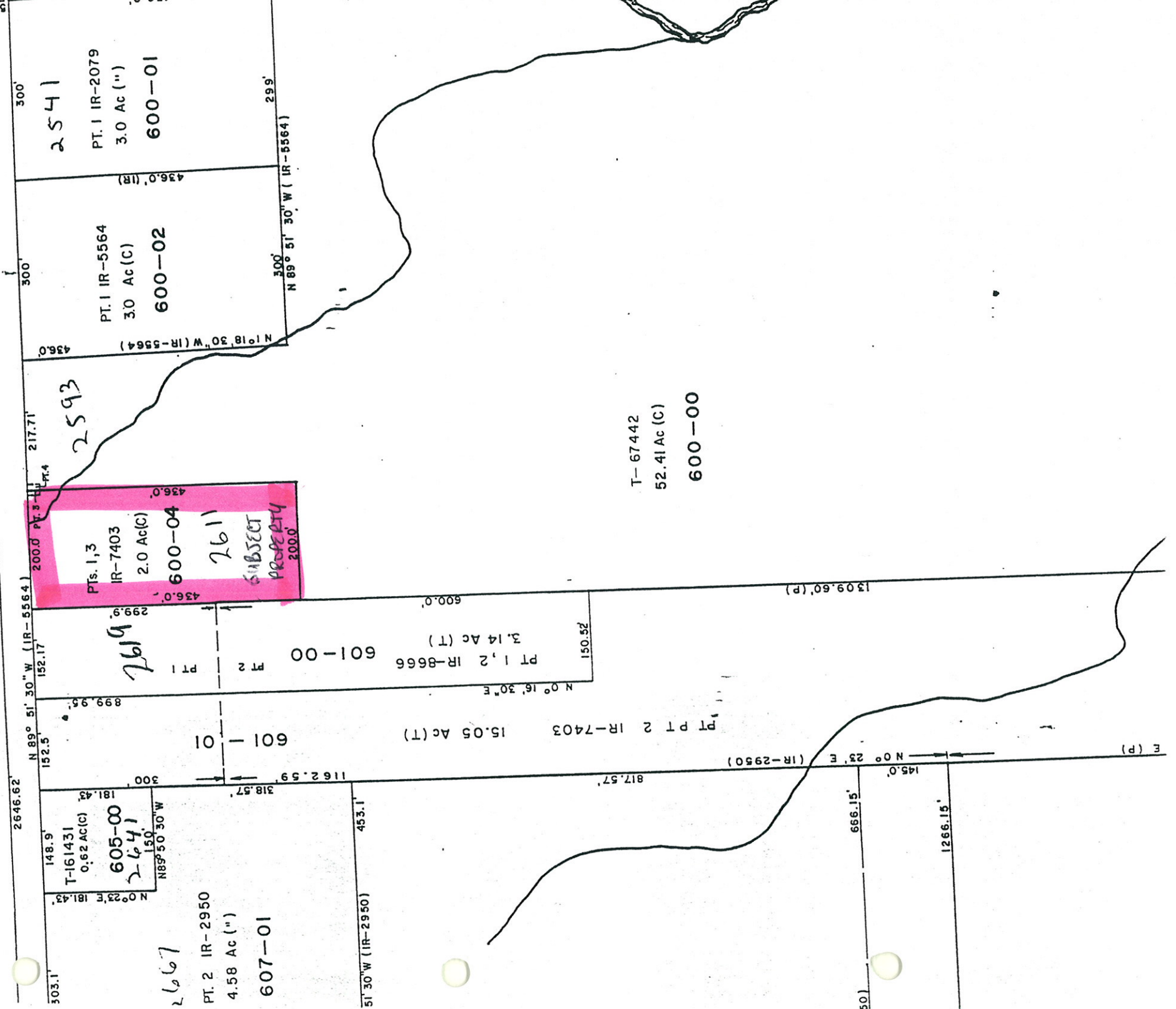
David Edgar

ADMINISTRATOR

Shuey Korkun

SCHEDULE "A" TO BY-LAW 92-10

SECONDARY HIGHWAY



303.1' 2646.62' N 0° 23' E 181.43'  
 148.9' T-161431 0.62 AC(C)  
 181.43' 150' N 89° 50' 30" W  
 605-00  
 2641  
 150'

2667  
 PT. 2 IR-2950  
 4.58 AC ("")  
 607-01

1162.59' 300' N 0° 23' E 181.43'  
 318.57' 453.1' 51' 30" W (IR-2950)  
 601-01  
 PT PT 2 IR-7403 15.05 AC(T)

7619  
 200.0' PT 3-11  
 217.71' 436.0' (IR)  
 200.0' PT 3-11  
 217.71' 436.0' (IR)  
 601-00  
 PT 1, 2 IR-8666 3.14 AC (T)  
 150.52' N 0° 16' 30" E

2593  
 200.0' PT 3-11  
 217.71' 436.0' (IR)  
 200.0' PT 3-11  
 217.71' 436.0' (IR)  
 600-04  
 Pts. 1,3 IR-7403 2.0 AC(C)  
 2611  
 SUBJECT PROPERTY  
 200.0'

436.0' N 1° 18' 30" W (IR-5564)  
 300' PT. 1 IR-5564 3.0 AC (C)  
 600-02  
 436.0' (IR)  
 300' N 89° 51' 30" W (IR-5564)  
 299'

300' 2541  
 PT. 1 IR-2079 3.0 AC ("")  
 600-01

T-67442  
 52.41 AC (C)  
 600-00

145.0' N 0° 23' E (IR-2950)  
 817.57' 1309.60' (P)

666.15'  
 1266.15'