

THE CORPORATION OF THE TOWNSHIP OF PRINCE

By-law 96-20

Being a by-law to establish as a street and assume it for public use a part of Marshall Drive described as Parts 1, 2 and 3, Plan 1R-2736

THE COUNCIL of the Corporation of the Township of Prince, pursuant to the Municipal Act, R.S.O. 1990, and amendments thereto ENACTS AS FOLLOWS:

1. STREET ESTABLISHED AND ASSUMED

The street or part of the street more particularly described as Parts 1, 2 and 3, Plan 1R-2736, being part of Marshall Drive, is hereby established as a public street and is hereby assumed for public use.

2. SCHEDULE 'A'

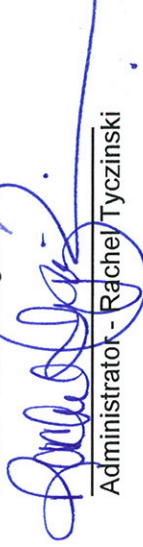
Schedule 'A' forms a part of this by-law.

3. EFFECTIVE DATE

This by-law takes effect on the day of its final passing.

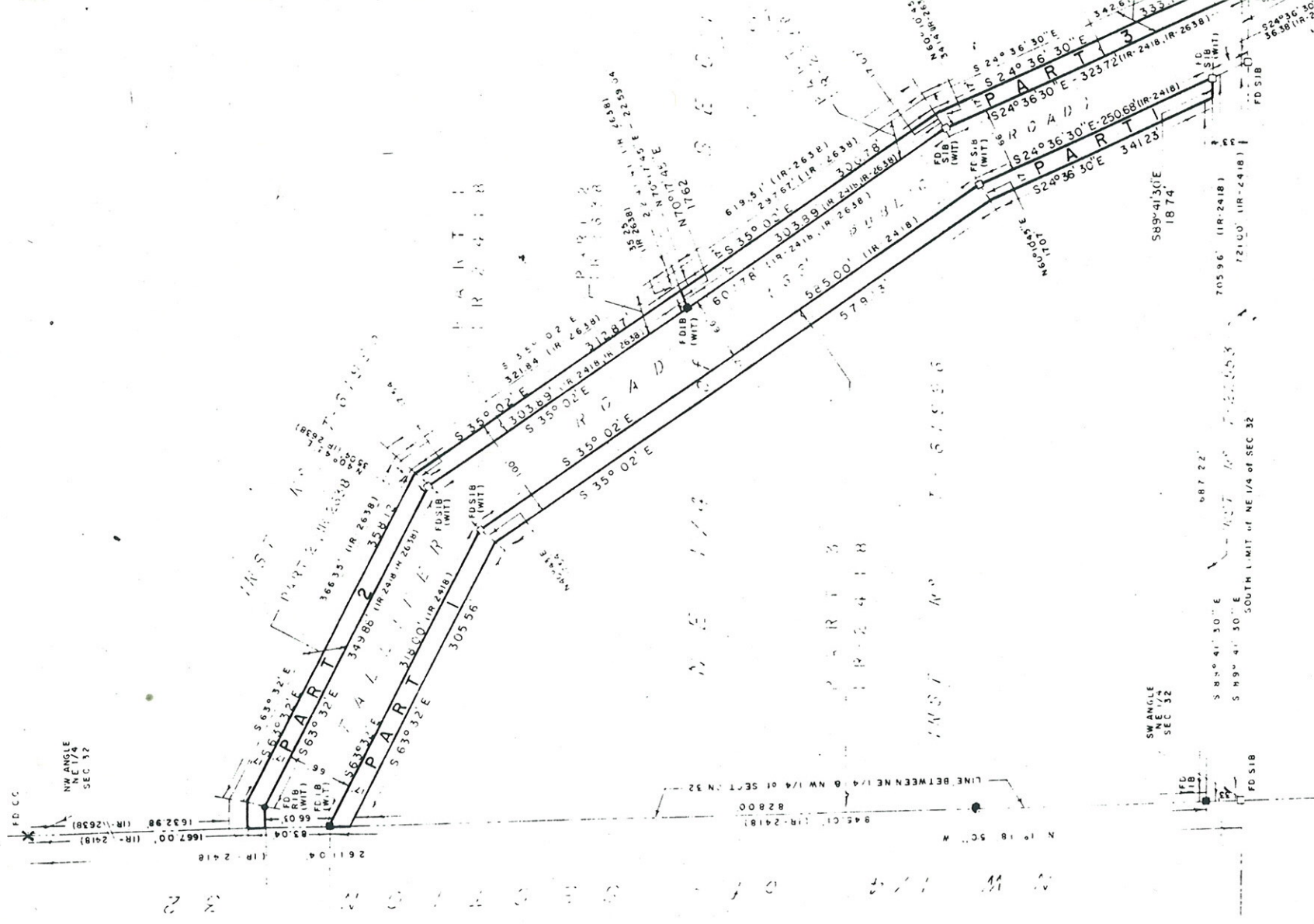
READ THREE TIMES AND PASSED in open Council this 26<sup>th</sup> day of November, 1996.

  
Reeve - David Edgar

  
Administrator - Rachel Tyczinski

Schedule "A" to By-law 96-20

3.



S E 1 1 1 of S E 0 7 1 0

PART	LOCATION
1	PT. OF NE 1/4 OF SEC. 32
2	
3	

SCHEDULE	
INSTRUMENT N°	
PART OF	T-61996
JAN and ANNA CZERWINSKI	04
	02
	02

OWNER	
JAN and ANNA CZERWINSKI	04
	02
	02