

**CORPORATION OF THE TOWNSHIP OF PRINCE
BY-LAW 2005-13**

ZONING - A by-law to amend the Township of Prince
Zoning By-law 77-7 with respect to property known
municipally as 99 Marshall Drive

THE COUNCIL of the Corporation of the Township of Prince, pursuant to section 34 of the Planning Act, R.S.O. 1990, and amendments thereto, ENACTS the following:

1. PART NORTH EAST 1/4 SECTION 32, BEING PARTS 2 & 3, PLAN 1R-2943, TOWNSHIP OF PRINCE, (99 MARSHALL DRIVE) CHANGED FROM R.R. (RURAL RESIDENTIAL) TO R.R.-S. (RURAL RESIDENTIAL WITH A SPECIAL EXCEPTION)

The zone designation on the lands described in Section 2 of the By-law, which lands are shown on Schedule "A" to by-law 77-7 and also outlined and marked "subject property" on the map attached as Schedule "A" to this by-law is changed from R.R. (Rural Residential) to R.R.-S. (Rural Residential with a Special Exception)

2. **SCHEDULE "A"**

Schedule "A" hereto forms part of this by-law.

3. **BY-LAW 77-7 SPECIAL EXCEPTION**

Notwithstanding the provisions of By-law 77-7, the properties as outlined on schedule "A" shall be permitted reduced frontage and acreage as follows:

Retained Parcel - 2.05 acres, 164' frontage

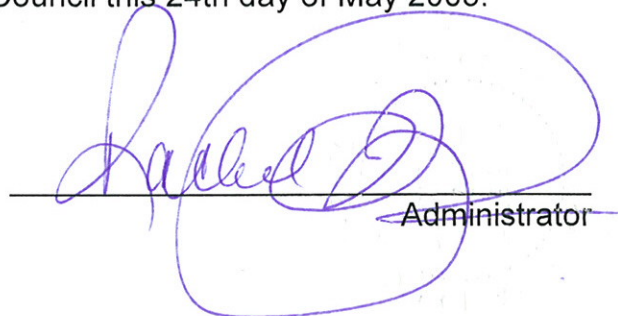
Severed Parcel - 2.09 acres, 174' frontage

4. **BY-LAW 77-7 CONTINUES TO APPLY**

The provisions of By-law 77-7 as amended hereby, continue to apply to the lands affected by this by-law except insofar as they are inconsistent with this by-law or higher or more restrictive or onerous requirements are imposed hereby.

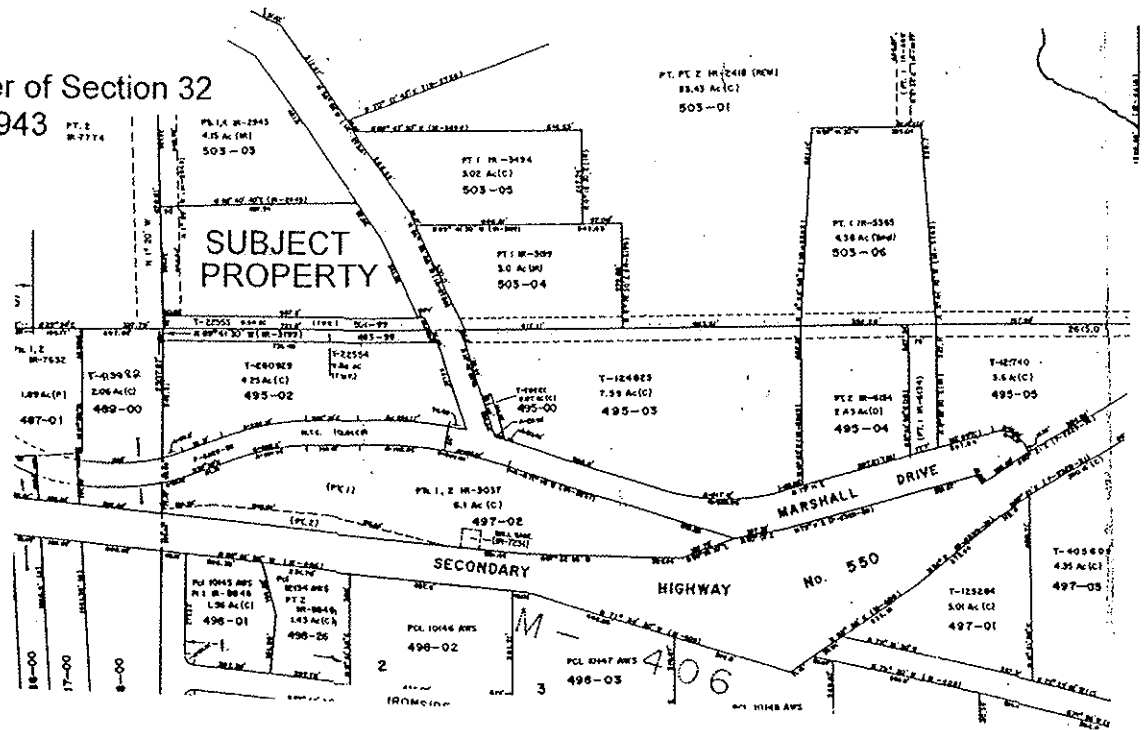
READ THREE TIMES AND PASSED in open Council this 24th day of May 2005.


Reeve


Administrator

Applicants: Dan Boucher and Melissa Mancuso

Subject Property
 Part of the North East Quarter of Section 32
 being Parts 2 & 3, Plan 1R-2943
 Township of Prince
 Roll 57 66 000 000 50302



LAND TO BE RETAINED		LAND TO BE SEVERED	
FEET	METRES	FEET	METRES
FRONTAGE = 174.07 FT.	53.06 M.	FRONTAGE = 164.99 FT.	50.29 M.
AREA = 31220.86 SQ. FT.	8474.42 SQ. M. (2.094 ACRES)	AREA = 89632.59 SQ. FT.	8328.73 SQ. M. (2.058)
DEPTH N = 537.34 FT.	163.78 M.	DEPTH N = 618.52 FT.	188.53 M.
DEPTH S = 618.52 FT.	188.53 M.	DEPTH S = 637.22 FT.	209.465 M.
WIDTH E = 158.00 FT.	48.16 M. APPROX.	WIDTH E = 150 FT.	45.72 M.
WIDTH W = 133.42 FT.	40.67 M.	WIDTH W = 150 FT.	45.72 M.

