

**CORPORATION OF THE TOWNSHIP OF PRINCE  
BY-LAW 2015-05**

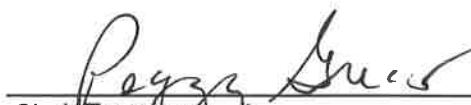
**ZONING - A by-law to amend the Township of Prince  
Zoning By-law 77-7 with respect to property known  
Section 36SE ¼ PT RP 1R1381 PT 1 (located between 2842 & 2788 Second Line West)  
Prince Township Roll # 57 66 000 000 25301 0000**

THE COUNCIL of the Corporation of the Township of Prince, pursuant to subsection 45(c) of the Planning Act, R.S.O. 1990, and amendments thereto, ENACTS the following:

- 1. Section 36SE ¼ PT RP 1R1381 PT 1 (between 2842 & 2788 Second Line West), Prince Township CHANGED FROM RURAL AGRICULTURAL TO RURAL RESIDENTIAL WITH "SPECIAL EXCEPTION"**  
The zone designation on the lands described in Section 2 of the By-law, which lands are shown on Schedule "A" to by-law 77-7 and also outlined and marked "subject property" on the map attached as Schedule "A" to this by-law is changed from Rural Agricultural to Rural Residential with Special Exception. The Special zoning allows a reduction in the minimum lot frontage from 90m (295') to 45.75 m (150') and the minimum area from 12140 sq. m. to 7,000 sq. m.
- 2. SCHEDULE "A"**  
Schedule "A" hereto forms part of this by-law.
- 3. BY-LAW 77-7 CONTINUES TO APPLY**  
The provisions of By-law 77-7 as amended hereby, continue to apply to the lands affected by this by-law except insofar as they are inconsistent with this by-law or higher or more restrictive or onerous requirements are imposed hereby.

READ THREE TIMES AND PASSED in open Council this 13<sup>th</sup> day of January, 2015

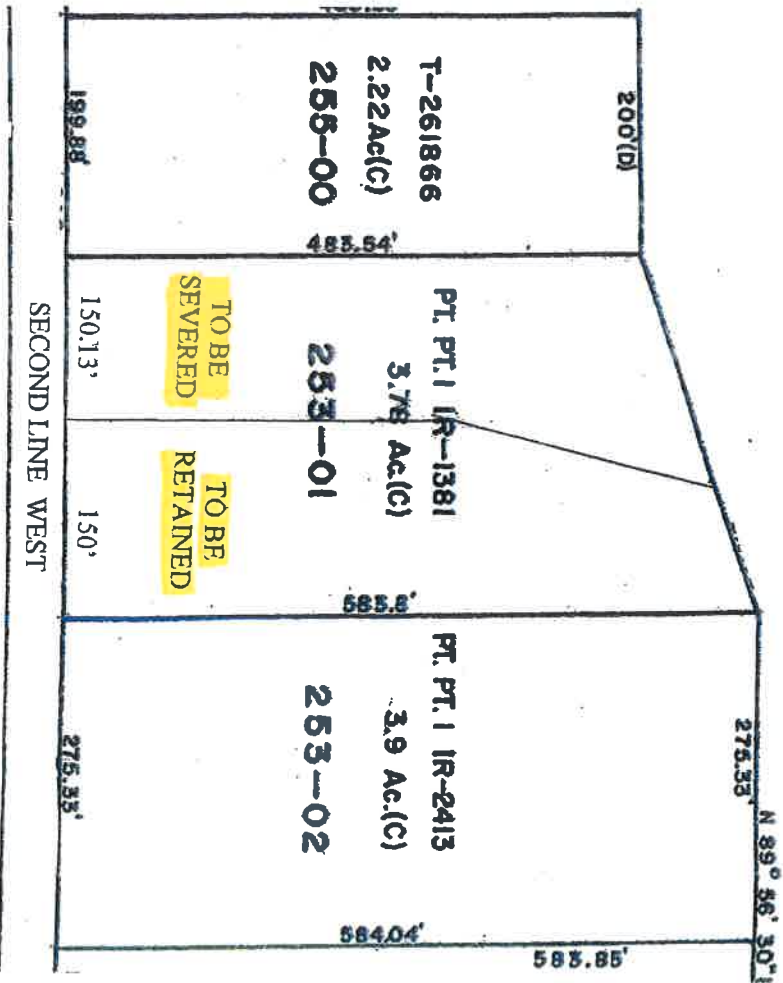
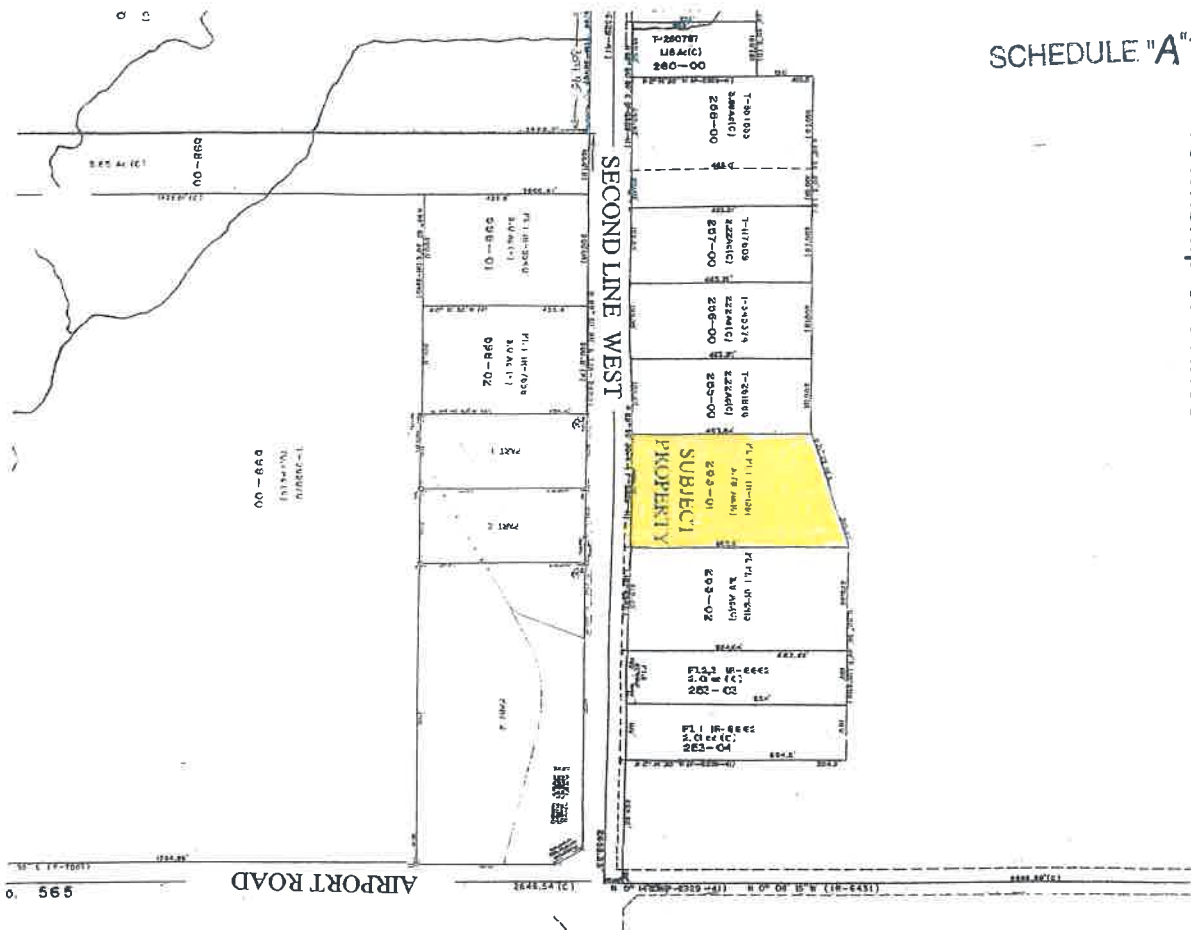
  
Reeve

  
Clerk/Treasurer

OFFICIAL PLAN APPLICATION A-01-2015-0P  
 REZONING APPLICATION A-01-2015-Z

Subject Property  
 SEC 26 SE ¼ PT RP IR1381 PT 1  
 Second Line West (located between 2842 & 2788 Second Line West)  
 Township of Prince

Roll # 25301



TO BE SEVERED  
 TO BE RETAINED